

LEADING REGENERATION

Geistlich  
Biomaterials

# Geistlich Fibro-Gide®

The Alternative Soft-Tissue Graft







# From Concept to Reality

Designing a preferred alternative to soft-tissue grafts has involved years of development and thousands of prototypes – the result is a product that will change the way you treat. Introducing Geistlich Fibro-Gide®.

Geistlich has drawn from its vast experience in researching, analyzing and commercializing collagen-based products to produce biomaterials that are tailor-made for specific dental procedures and therapeutic solutions. This collagen expertise has led Geistlich to its latest innovation, Geistlich Fibro-Gide®, a volume-stable collagen matrix, specifically designed to meet your clinical demands for soft-tissue regeneration.



## Screening by cell proliferation

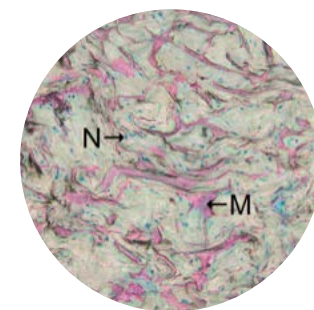
In order to mimic the mechanical stresses of human mastication and in-vivo application, Geistlich developed a bioreactor to test the properties of Geistlich Fibro-Gide®.

After the first round of testing, the best prototypes were cultured with human gingival fibroblasts and placed under mechanical stress. For the second round of selection, the best prototypes in terms of cell proliferation and volume stability, were chosen.<sup>5</sup>



## Mechanical testing

The remaining prototypes endured rigorous testing with repeated cycles of mechanical force to mimic that of the oral cavity. The best prototypes retained 70–80 % of their volume and remained stable even after the application of these mechanical forces.<sup>5</sup>

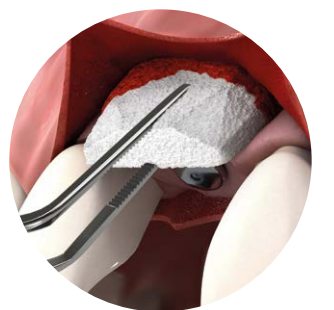


## Selecting for soft-tissue integration

The impact on soft-tissue integration, remodeling and vascularization in the remaining prototypes were tested with different degrees of collagen cross-linking. The Geistlich **smart cross-linking** balances mechanical volume stability with cell compatibility and tissue integration.<sup>6-8</sup>

Histologic slide showing the formation of new connective tissue in the pores of Geistlich Fibro-Gide® after 4 weeks (M = collagen matrix; N = nuclei of invaded cells in blue).<sup>1</sup>

Histology by Geistlich Pharma AG, Wolhusen, Switzerland.



## The Alternative Soft-Tissue Graft: Geistlich Fibro-Gide®

Finally, Geistlich Fibro-Gide® was tested in clinical studies and determined to meet your clinical demand for a volume-stable collagen matrix that supports and promotes soft-tissue regeneration around natural teeth and implants.

Geistlich Fibro-Gide® shows comparable results to connective tissue grafts in terms of change in soft-tissue volume over time.<sup>1-4</sup> This demonstrates that Geistlich Fibro-Gide® is an ideal alternative to connective tissue grafts.

For more information visit:  
[Fibro-Gide.geistlich-na.com](http://Fibro-Gide.geistlich-na.com)



# What Nature Inspires, Geistlich Engineers

Geistlich Fibro-Gide® is a volume-stable collagen matrix, specifically designed for soft-tissue regeneration.

Geistlich Fibro-Gide® is ideally suited for soft-tissue augmentation around natural teeth and implants, as a submerged scaffold where an increase in soft-tissue thickness is clinically desired. Additionally, Geistlich Fibro-Gide® is indicated for alveolar ridge reconstruction for prosthetic treatment and recession defects for root coverage.

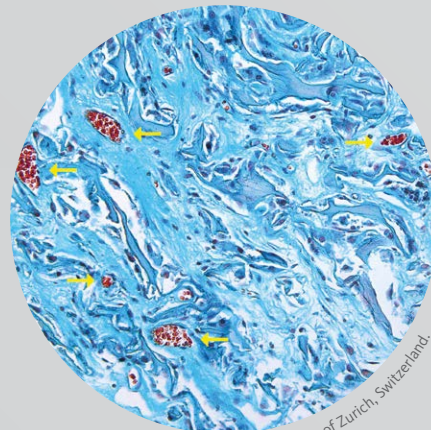
It's not hard to see why . . .

## Made of Collagen

Geistlich Fibro-Gide® is a porcine, porous, resorbable and volume-stable collagen matrix.<sup>9</sup>

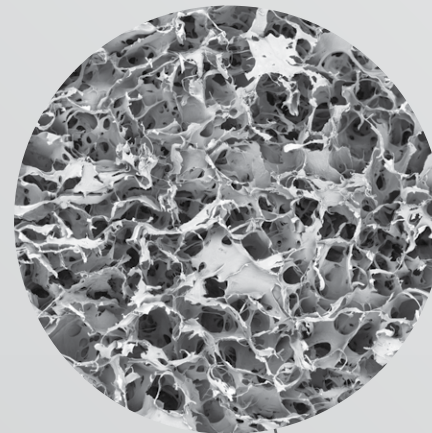
## Supports Soft-Tissue Integration

The porous network of Geistlich Fibro-Gide® supports angiogenesis (yellow arrows), formation of new connective tissue and stability of the collagen network in submerged healing situations.<sup>1,7</sup>



## Volume Stability

The reconstituted collagen undergoes smart cross-linking for volume stability of the matrix.<sup>9,10</sup> Thus, the porous structure allows blood clot stabilization and the ingrowth of host cells.<sup>6,10</sup>



## Intended Use & Indications

Geistlich Fibro-Gide® is intended to be used for soft-tissue regeneration at the alveolar ridge.<sup>9</sup>

- Indications are
- > soft-tissue augmentation<sup>9</sup>
  - > recession coverage<sup>9</sup>

## Compared to Connective Tissue Graft

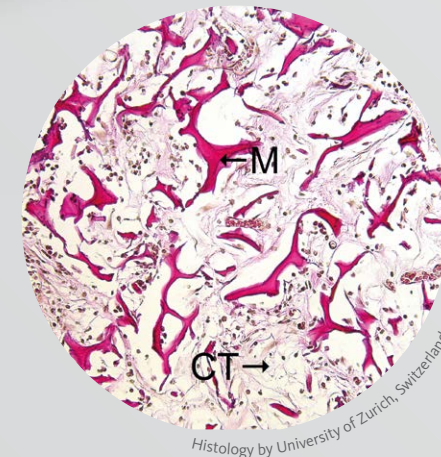
Geistlich Fibro-Gide® shows **comparable results** to connective tissue grafts in terms of change in soft-tissue volume over time.<sup>1,2,17,18</sup> This makes Geistlich Fibro-Gide® the alternative connective tissue graft.

- > No tissue harvesting
- > Unlimited availability
- > Consistent & standardized product
- > Ready-to-use
- > No risk of necrosis
- > Reduction of post-operative pain

## Soft-Tissue Formation

Animal models have shown good integration of Geistlich Fibro-Gide® into the surrounding soft-tissue while maintaining stability.<sup>6</sup>

(M = collagen matrix; CT = connective tissue)



## Conclusion

Geistlich Fibro-Gide® has been proven to provide stable augmented soft-tissue in terms of both quality and quantity, with the additional benefits of eliminating the donor site, shorter surgical time and lower patient pain perception.<sup>1-4</sup>



# Better Quality of Life for Your Patients

Interview with PD Dr. Daniel Thoma  
(University of Zurich, Switzerland)

What do you like about Geistlich Fibro-Gide®?

What I like most about Geistlich Fibro-Gide® is its unlimited availability and its standardized quality. In contrast to subepithelial connective tissue grafts, Geistlich Fibro-Gide® does not give a reason to worry about limitations in terms of quantity and quality. Moreover, avoiding a second surgical site reduces patient morbidity as well as my surgical time.

Do you see any risks in the use of Geistlich Fibro-Gide®?

Every surgical intervention is associated with certain risks. Thus, in the case of Geistlich Fibro-Gide®, incomplete wound healing might occur with exposure of the material to the oral cavity. Based on our clinical observations, such complications do not result in any local infection, and the material does not have to be removed. As such, I would even expect less risk than with the use of a subepithelial connective tissue graft.

When patients need a soft-tissue augmentation procedure, what do you tell them?

I usually offer my patients two options when a soft-tissue grafting procedure is indicated. Option one is the use of a subepithelial connective tissue graft. This procedure is well-documented in the literature with long-term outcomes and considered the gold standard.

As an alternative, the use of Geistlich Fibro-Gide® is suggested, which offers benefits in terms of reduced patient morbidity, surgical time and unlimited availability. My patients are informed that the use of Geistlich Fibro-Gide® is less documented, but in pre-clinical and clinical research performed over a ten year period, the outcomes were non-inferior to the gold standard.<sup>1,2</sup>

How do your patients benefit, and how do you benefit from using Geistlich Fibro-Gide®?

Advantages for me are the unlimited availability and standardized quality, as well as the ease of use and faster surgeries. My patients benefit from shorter treatments, less swelling and less morbidity since no second surgery is needed. Larger areas and more sites can be treated at the same time.

“Avoiding a second surgical site reduces patient morbidity as well as my surgical time.”

PD Dr. Daniel Thoma





## Single Stage Immediate Implant Placement and Soft-Tissue Thickening



“To gain or preserve soft-tissue thickness at an implant site, my patients and I prefer opening a package (Geistlich Fibro-Gide®) instead of a palate. Now I have a viable alternative.”

Dr. Jeffrey Ganeles | Ft. Lauderdale, FL, USA

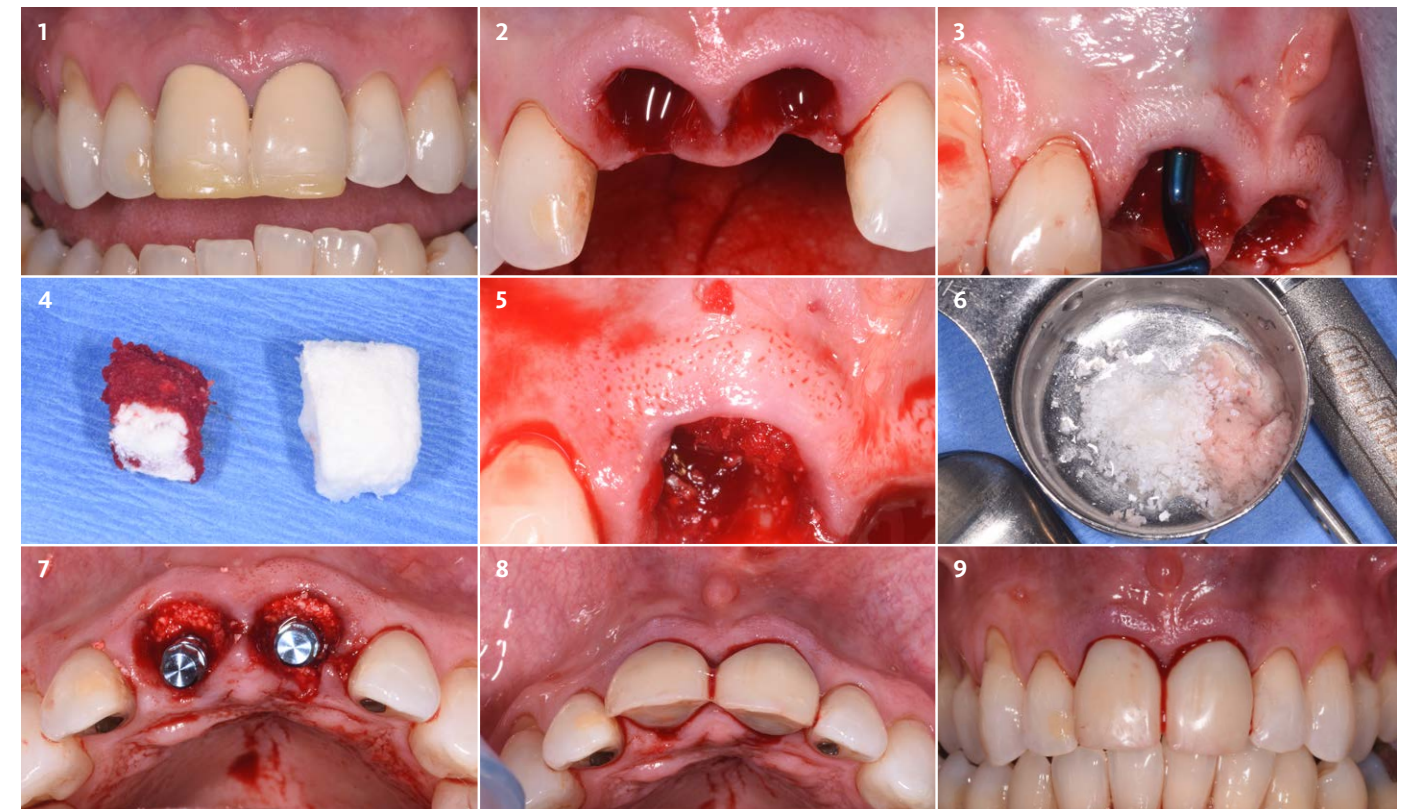
**Objective:** Immediate placement of both incisors with simultaneous soft-tissue thickening of the buccal aspect.

**Conclusion:** Geistlich Fibro-Gide® is an easy to apply collagen matrix showing predictable results in soft-tissue thickness augmentation around dental implants.



## Clinical Cases

The following 12 clinical cases from around the world demonstrate the use of Geistlich Fibro-Gide® for gain of soft-tissue volume and recession coverage around implants and natural teeth.



1 Initial clinical situation, tooth #8 and #9 require extraction.

2 Clinical view post extraction of tooth #8 and #9.

3 Evaluation of the buccal soft-tissue thickness.

4 Trimming of Geistlich Fibro-Gide® to fit in the gap between the buccal soft-tissue and the buccal bone wall.

5 Geistlich Fibro-Gide® in place: an immediate volume increase of the buccal soft-tissues are visible.

6 Mixing of autologous bone and Geistlich Bio-Oss® particles for placement in the gaps around the implants.

7 Immediate implant placement with the bone mixture applied was performed.

8 Provisional restoration at time of surgery (occlusal view).

9 Provisional restoration at time of surgery (frontal view).



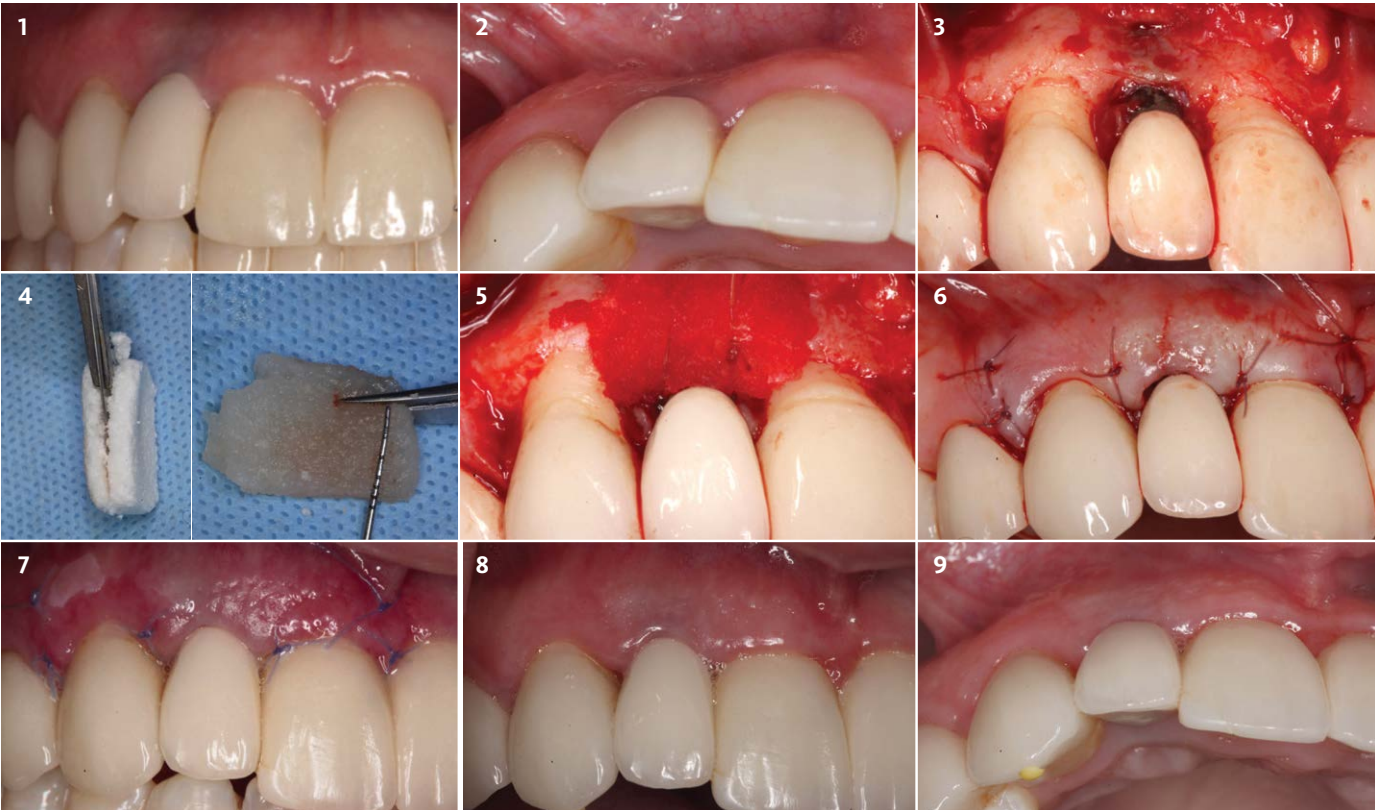
# Esthetic Soft-Tissue Augmentation of Two Implant Sites in the Same Patient



Dr. Alan Fetner, DMD | Jacksonville, FL, USA

**Objective:** Augmentation of the soft-tissue on two implant sites, #7 and #10, using a conventional full thickness flap with vertical releasing incisions on site #7 and an envelope flap on site #10.

Site #7



- 1 Thin mucosal tissue over implant #7 creating an unesthetic appearance.

2 Occlusal view of #7 reveals buccal soft-tissue defects.

3 Augmentation of the soft-tissue on two implant sites, #7 and #10, using a conventional full thickness flap with vertical releasing incisions on site #7 and an envelope flap on site #10.
- 4 Geistlich Fibro-Gide® is split into two 3mm thick matrices to be used in both sites, hydrated with sterile saline and trimmed to the defect dimensions.

5 Geistlich Fibro-Gide® is secured to the periosteum apically and the interproximal papillae with 5-0 chromic gut sutures.

6 Passive closure of the flap achieved with 6-0 vicryl sutures.
- 7 1 week post-surgery reveals uneventful healing with maintenance of tissue volume.

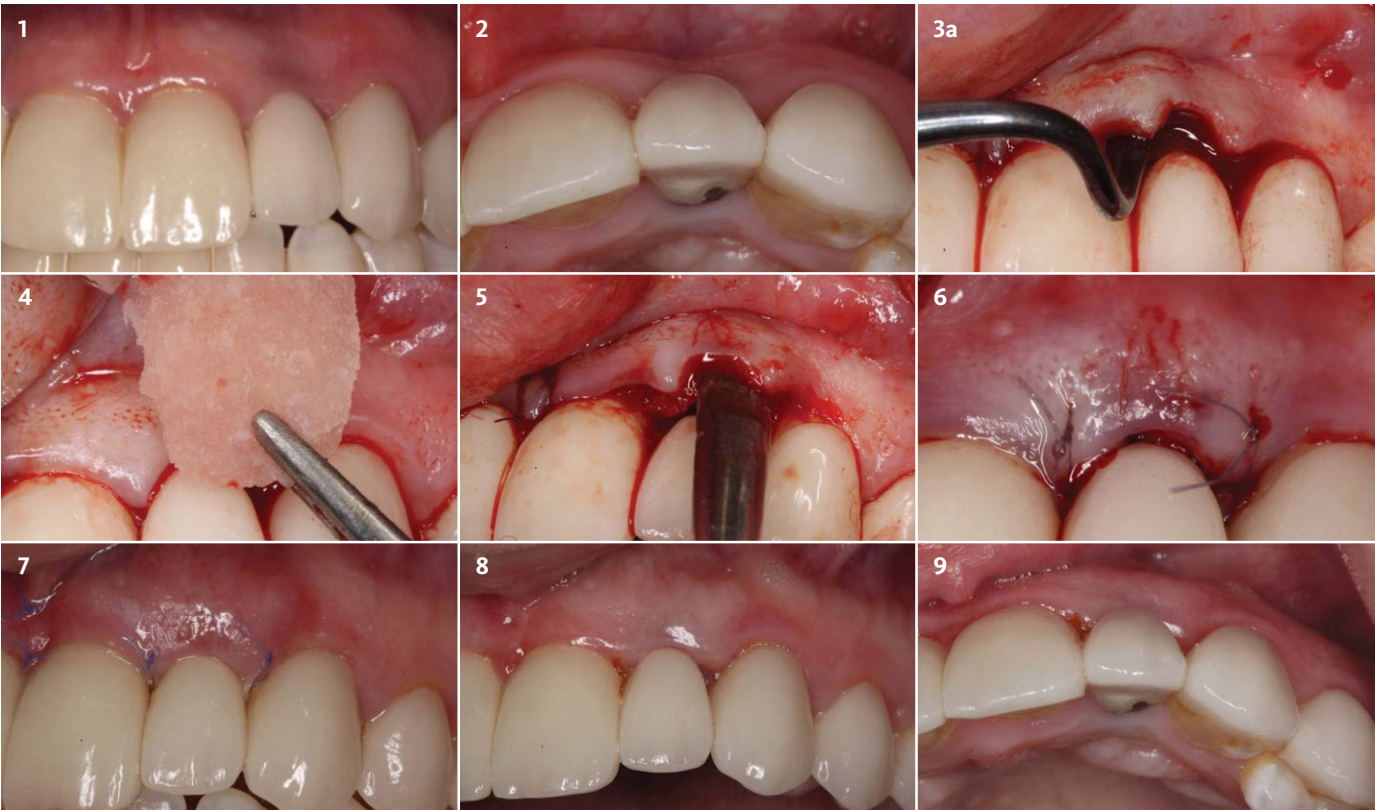
8 Buccal view at 8 weeks reveals uneventful healing with maintenance of tissue volume.

9 Occlusal view at 8 weeks post-surgery.

Site #10

“Unlike connective tissue grafts, where you are limited by the patient’s anatomy, Geistlich Fibro-Gide® offers *variable thickness*, allowing the clinician the opportunity to choose the desired and optimal thickness for the procedure”

**Conclusion:** Geistlich Fibro-Gide® promotes uneventful healing when used as an alternative to connective tissue grafts and can significantly increase the soft-tissue thickness around dental implants.



- 1 Thin mucosal tissue over implant #10 creating an unesthetic appearance.

2 Occlusal view of #10 reveals buccal soft-tissue defects

3 Full-thickness envelope flap prepared around implant #10.
- 4 The hydrated matrix is adjusted to the defect dimensions.

5 The matrix is passively placed under the envelope flap.

6 6-0 Vicryl sutures used to secure the matrix and achieve passive and complete coverage of the flap.
- 7 1 week post-surgery reveals uneventful healing with maintenance of tissue volume.

8 Buccal view at 8 weeks reveals uneventful healing with maintenance of tissue volume.

9 Occlusal view at 8 weeks post-surgery.



# Thickening Soft-Tissue When Uncovering an Implant in the Anterior Maxilla



“Geistlich Fibro-Gide® can be used when the peri-implant soft-tissue has to be thickened.”

Prof. Leonardo Trombelli | Ferrara, Italy

2 year follow-up

**Objective:** Augmentation of the soft-tissue on a single implant, tooth #8, with Geistlich Fibro-Gide® using a minimally invasive flap design.

**Conclusion:** Geistlich Fibro-Gide® appears to be a valid alternative to connective tissue grafts (CTG) for significantly increasing the thickness of soft-tissue around dental implants.



- 1 Baseline buccal view: immediate implant placement was performed 3 months prior to replacing tooth #8.

2 Baseline occlusal view: soft-tissue deficiency on the buccal aspect.

3 Placement of Geistlich Fibro-Gide® with minimal envelope flap and inserting a temporary crown.
- 4 Stabilization of Geistlich Fibro-Gide® to the buccal mucosa using internal mattress sutures.

5 2 week follow-up at suture removal.

6 4 week post-surgery: uneventful wound healing and an increase in soft-tissue volume.
- 7 Occlusal view 11 months post-surgery: there is a clear substantial increase in the soft-tissue thickness.

8 Buccal view 11 months post-surgery: a substantial increase in soft-tissue thickness is evident.

9 Buccal view 2 years post-surgery.

# Insufficient Soft-Tissue Thickness Around Single Implant in the Posterior Maxilla

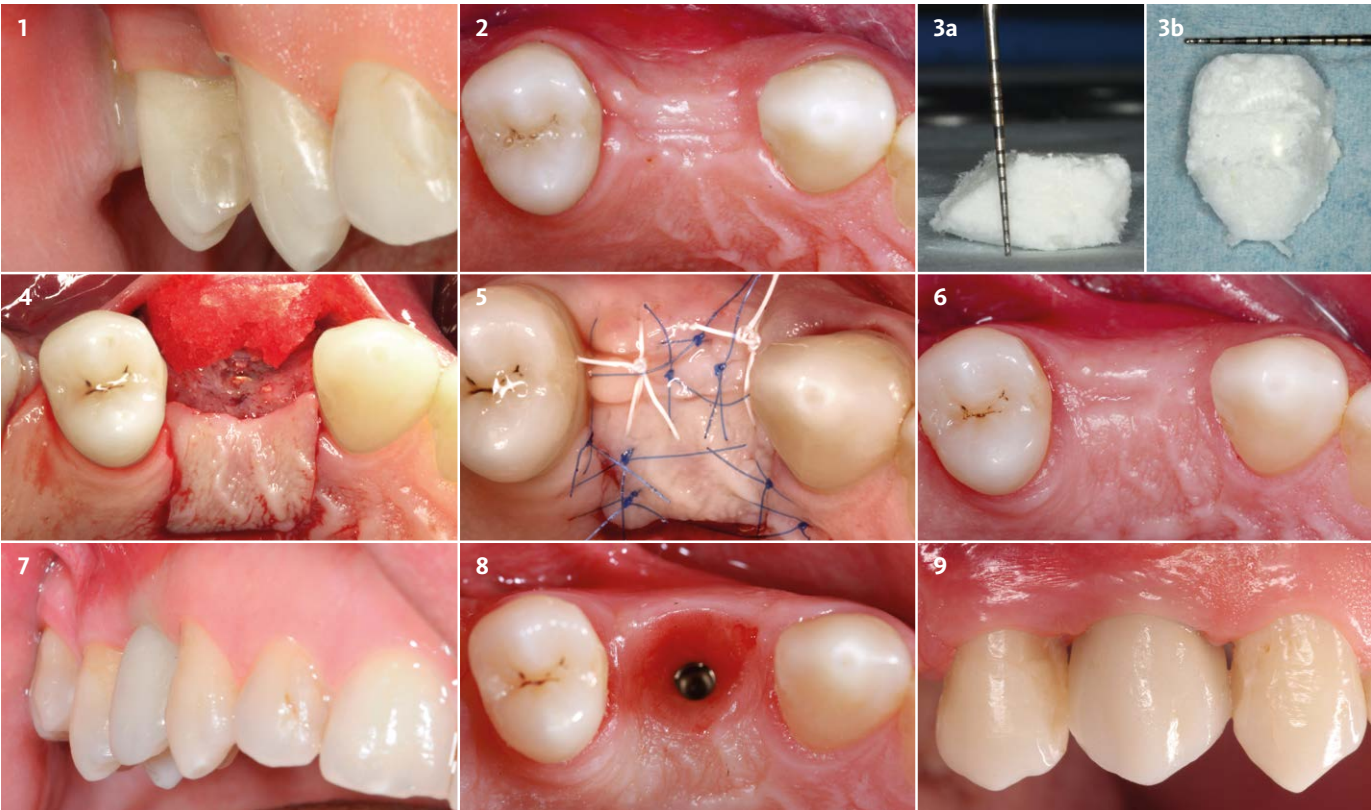


“Geistlich Fibro-Gide® can be used safely as an alternative to harvesting autologous connective tissue grafts.”

Prof. Mariano Sanz and Dr. Ignacio Sanz Martín | Madrid, Spain

**Objective:** Restore soft-tissue volume deficiency.

**Conclusion:** Geistlich Fibro-Gide® helped to increase the buccal soft-tissue volume around the implant restoration.



- 1 Baseline buccal view: soft-tissue concavity at the dental implant site.

2 Baseline occlusal view: volume deficiency on the buccal aspect.

3 Adapting and trimming of Geistlich Fibro-Gide® to the defect size. Additional bevel cut performed for the area to be positioned close to the incision line.
- 4 Position and fixation of Geistlich Fibro-Gide® to the buccal flap with horizontal mattress suture.

5 Primary closure obtained by horizontal mattress and single interrupted sutures.

6 4 months follow-up: showing the healed soft-tissue after augmentation surgery.
- 7 4 months follow-up: provisional restoration. Notice volume recovery.

8 Occlusal view before final restoration.

9 9 months follow-up: final restoration after soft-tissue augmentation surgery.



# Insufficient Soft-Tissue Thickness in a Single Tooth Gap in the Anterior Maxilla



“Geistlich Fibro-Gide® is one of the major innovations in regenerative dentistry in the last 20 years.”

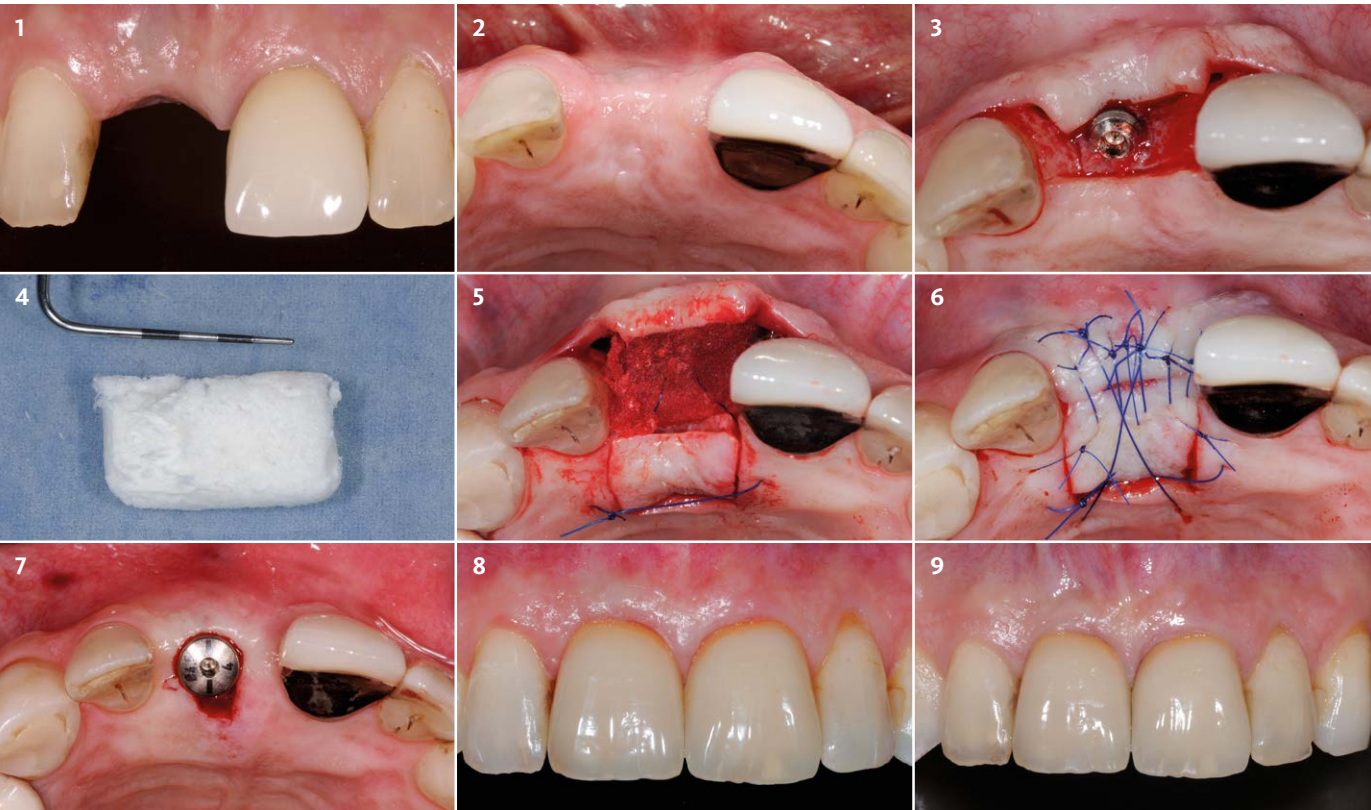
PD Dr. Daniel Thoma | Zurich, Switzerland

► To View the Surgical Video Visit:  
<https://fibro-gide.geistlich-na.com/#surgical-videos>

2.5 year follow-up

**Objective:** Gain in soft-tissue thickness in the esthetic area with Geistlich Fibro-Gide®.

**Conclusion:** After 6 months, the final restorations were placed. The natural look of the augmented soft-tissue can be appreciated, and no implant translucency is visible.



- 1 Baseline frontal view: missing central incisor. Implant visible through mucosa due to thin biotype.
- 2 Baseline occlusal view: soft-tissue deficit in the buccal and occlusal area.
- 3 Flap elevation on the buccal side using a full flap crestally and a split flap buccally.
- 4 Adaption of Geistlich Fibro-Gide® to the defect size.
- 5 Palatal island flap prepared to allow for tension-free wound closure. Geistlich Fibro-Gide® in situ, immobilized with a mattress suture.
- 6 Tension-free wound closure using single interrupted sutures (Dafilon 5-0, Braun).
- 7 Abutment connection.
- 8 6 months follow-up: final crown in place.
- 9 2.5 year follow-up shows stable soft-tissue conditions.

# Insufficient Soft-Tissue Thickness in Extended Gap in the Posterior Mandible



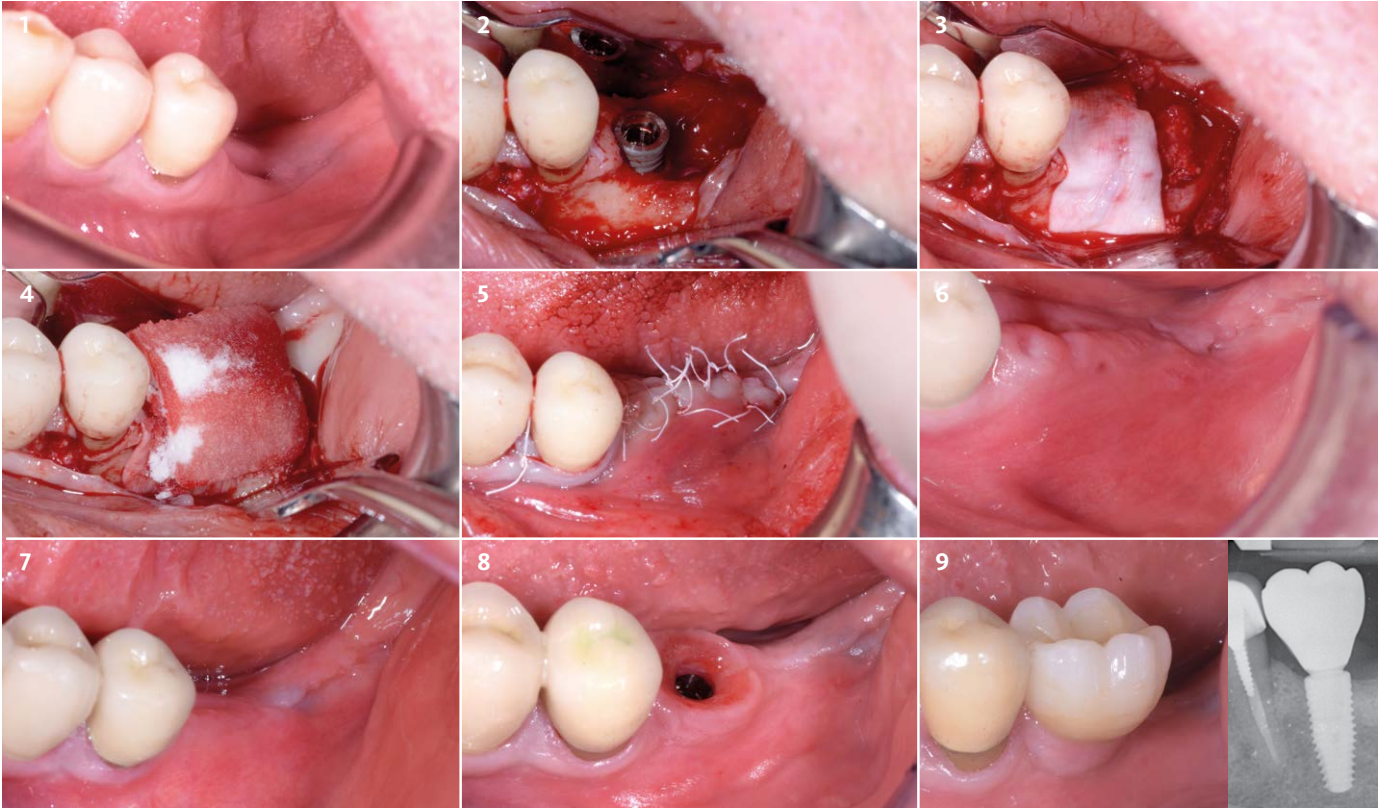
“Geistlich Fibro-Gide® is one of the best innovations for gaining soft-tissue thickness.”

Dr. Daniele Cardaropoli | Torino, Italy

2 year follow-up

**Objective:** Increasing the thickness of soft-tissue around dental implants with Geistlich Fibro-Gide® in the posterior area of the mandible to support protection and to restore function.

**Conclusion:** Geistlich Fibro-Gide® can be used as an alternative to connective tissue grafts to significantly increase the soft-tissue thickness around dental implants.



- 1 Baseline before implant placement showing the soft-tissue deficiency.
- 2 Implant surgery after implant placement showing the need for guided bone regeneration.
- 3 Guided bone regeneration with Geistlich Bio-Oss® and Geistlich Bio-Gide®.
- 4 Geistlich Fibro-Gide® was trimmed to the defect size and placed at full thickness (6 mm) on top of Geistlich Bio-Gide®.
- 5 Wound closure (PTFE 5/0 sutures) by combining horizontal mattress sutures and single sutures in a double layer.
- 6 2 weeks follow-up post-surgery.
- 7 3 months follow-up post-surgery.
- 8 Re-entry was performed 3 months post-surgery. Soft-tissue emergence profile at the time of final ceramic-crown delivery 4 months after implant placement.
- 9 Clinical and radiographic situation 2 years after implant insertion.



# Ridge Preservation and Simultaneous Soft-Tissue Augmentation in the Posterior Mandible



“Geistlich Fibro-Gide® is a ready-to-use product that can easily be used on top of a GBR procedure for soft-tissue thickening.”

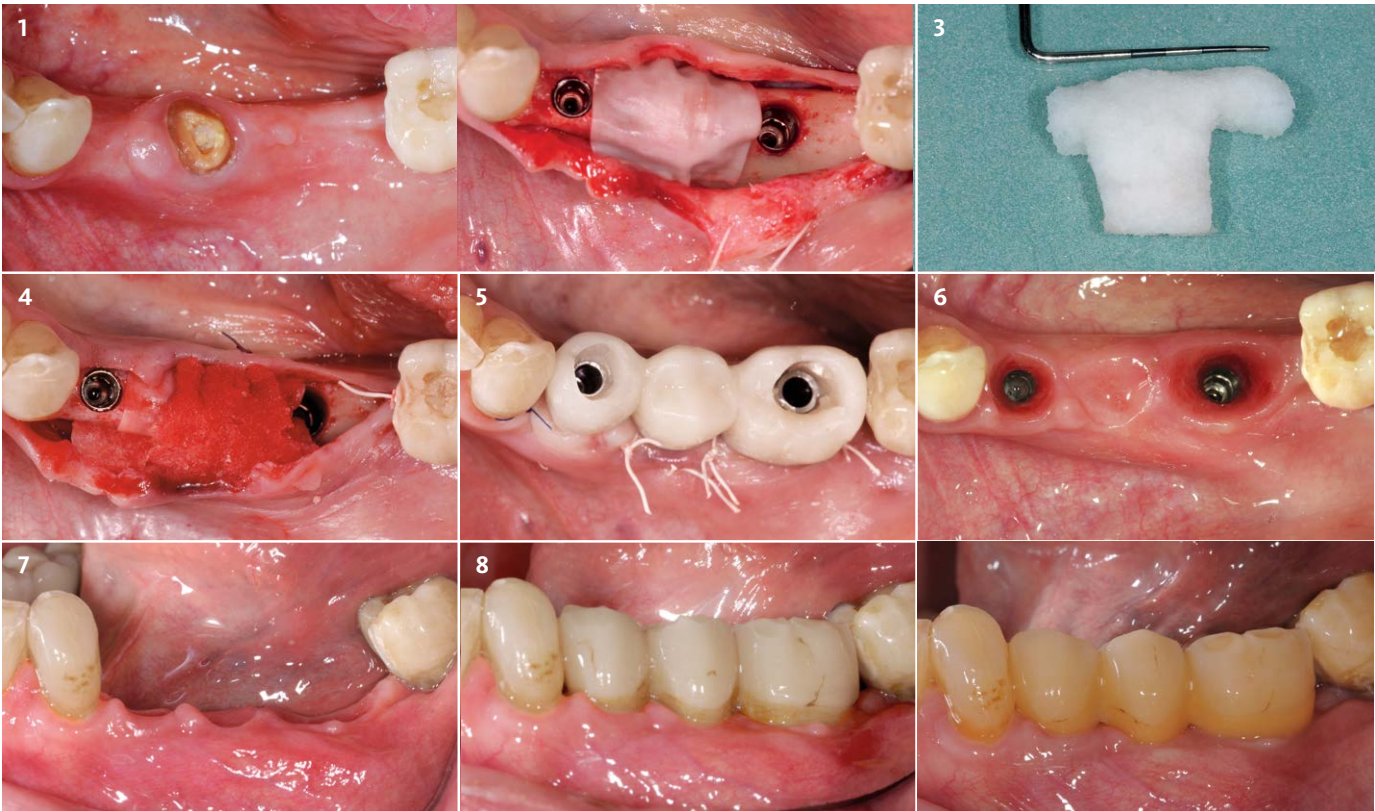
PD Dr. Daniel Thoma | Zurich, Switzerland

2.5 year follow-up

[To View the Surgical Video](https://fibro-gide.geistlich-na.com/#surgical-videos)  
<https://fibro-gide.geistlich-na.com/#surgical-videos>

**Objective:** Augmentation of soft-tissue around dental implants with Geistlich Fibro-Gide® while performing a ridge preservation procedure using Geistlich Bio-Oss® and Geistlich Bio-Gide®.

**Conclusion:** Geistlich Fibro-Gide® shows predictable results in soft-tissue augmentation under pontics compared to connective tissue grafts.



- 1 Baseline occlusal view: situation before removal of tooth #20.

2 Tooth removal and extraction socket management with Geistlich Bio-Oss® and Geistlich Bio-Gide®.

3 Geistlich Fibro-Gide® was trimmed to the defect size, to augment the buccal and crestal soft-tissue area of the ridge.
- 4 Geistlich Fibro-Gide® in place, augmenting buccal and crestal area of tooth #20 and buccal in the edentulous area tooth #21 to tooth #19.

5 Immediate provisionalization of the implants.

6 3 weeks post-surgery: occlusal view of augmented area with created emergence profile.
- 7 3 weeks post-surgery: buccal view of augmented area with created emergence profile.

8 Provisional reconstruction 6 weeks post-surgery.

9 Final restoration 2.5 years post-surgery: soft-tissue thickness remains stable over time.

# Guided Bone Regeneration with Simultaneous Soft-Tissue Augmentation in the Anterior Maxilla

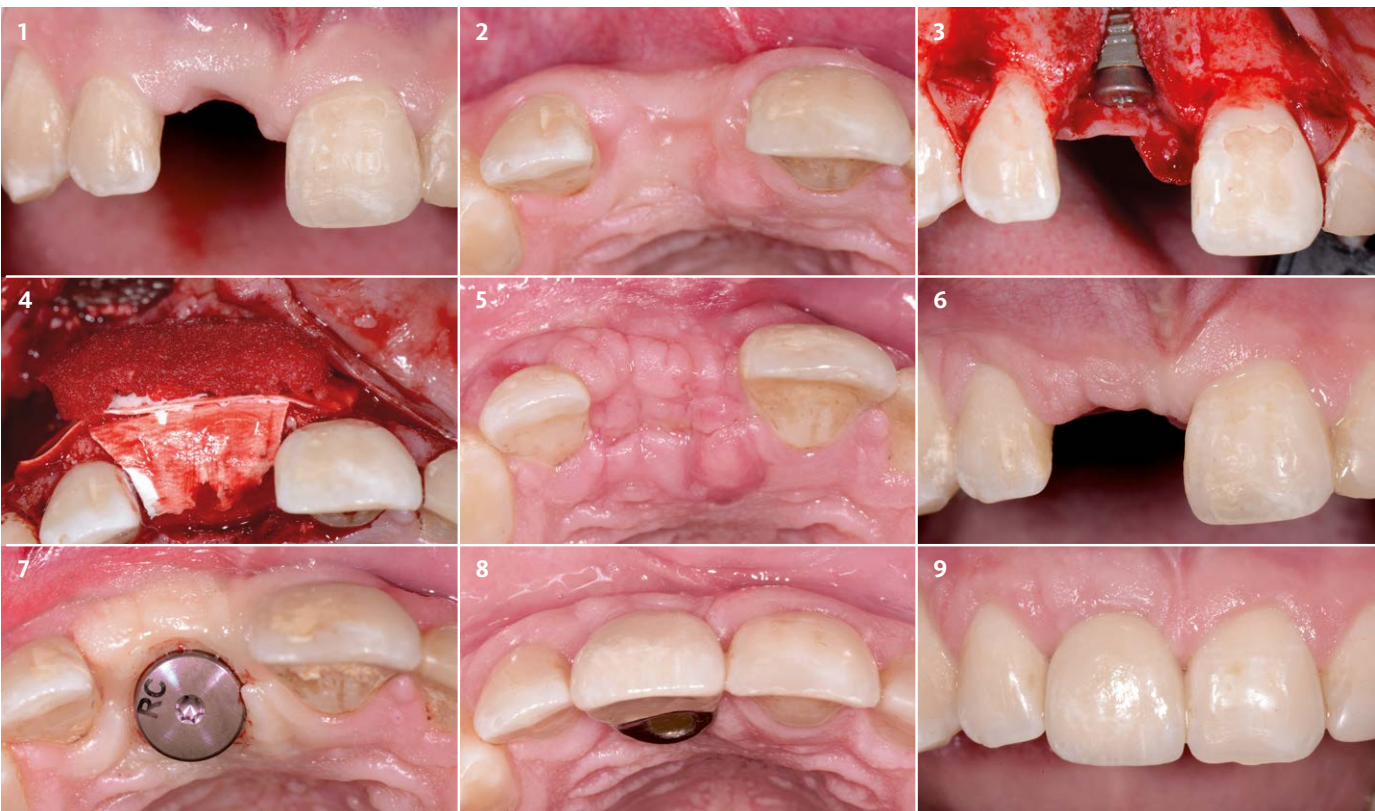


“Geistlich Fibro-Gide® shows an uneventful tissue integration with simultaneous guided bone regeneration procedures in a preliminary human study after two months of healing.”

PD Dr. med. Vivianne Chappuis | Bern, Switzerland

**Objective:** Guided bone regeneration procedure with autologous bone chips, Geistlich Bio-Oss® and Geistlich Bio-Gide® simultaneously with soft-tissue augmentation using Geistlich Fibro-Gide®.

**Conclusion:** Guided bone regeneration can be performed simultaneously with soft-tissue augmentation using Geistlich Fibro-Gide®.



- 1 Baseline frontal view: missing central incisor.

2 Baseline occlusal view: The facial contour is flattened by physiological dimensional ridge alterations post-extraction.

3 Full-thickness flap using one releasing incision in the distal aspect of the canine. Simultaneous contour augmentation using GBR was performed with autogenous bone chips to cover the exposed implant combined with a layer of Geistlich Bio-Oss® and Geistlich Bio-Gide®.
- 4 Application of Geistlich Fibro-Gide® on top of the augmented area. A tension-free primary wound closure was obtained by a periosteal releasing incision.

5 Suture removal 14 days post-surgery. Uneventful wound healing and an increase in soft-tissue volume.

6 Frontal view 4 weeks post-surgery.
- 7 2 months follow-up combined with abutment connection.

8 Occlusal view of final restoration 2 years post-surgery.

9 Final restoration 2 years post-surgery shows pleasing esthetics.



# Immediate Implant Placement and Soft-Tissue Thickening in a Split-Mouth Approach

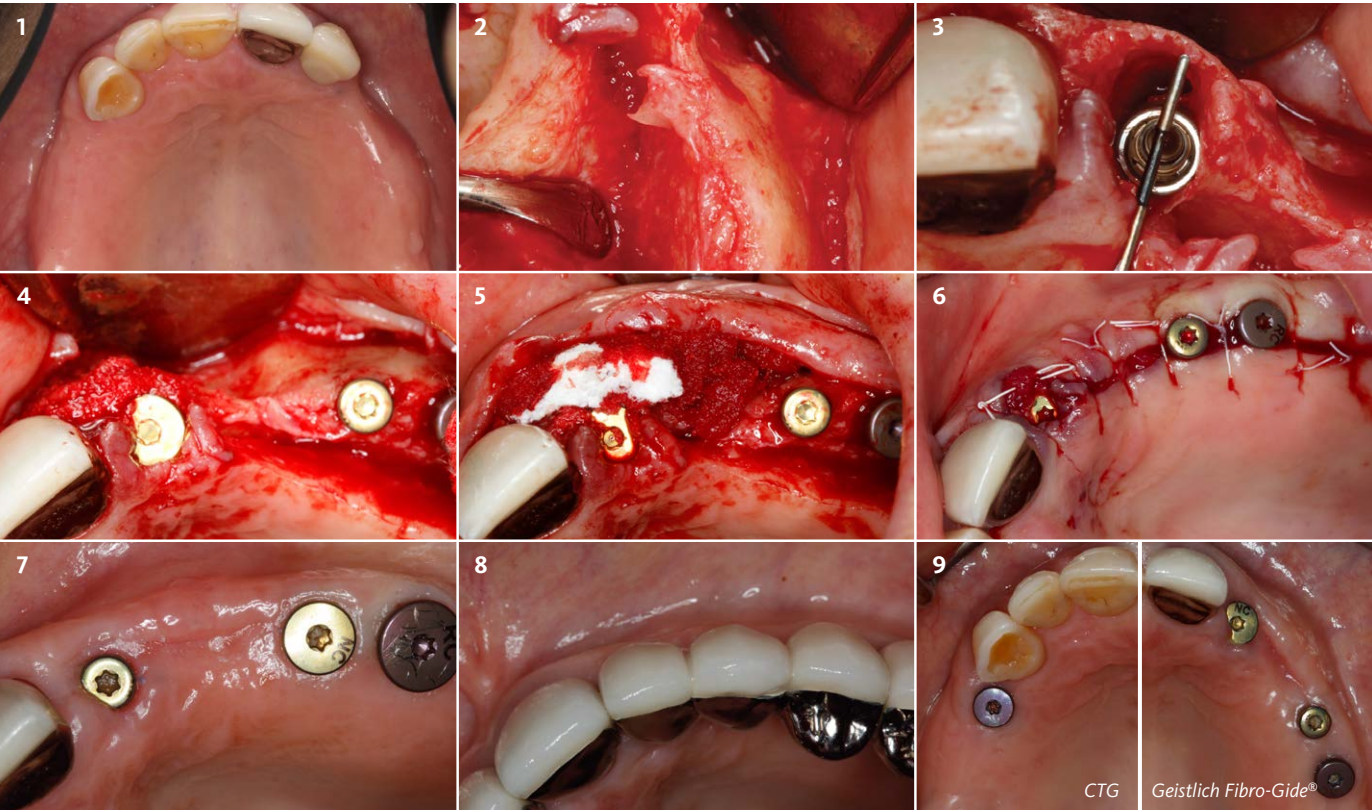


“Geistlich Fibro-Gide® allowed predictable results, with less invasiveness.”

Dr. Waldemar Polido | Indianapolis, IN, USA

**Objective:** Direct comparison of two different soft-tissue thickening approaches around implants in the same patient. On one side Geistlich Fibro-Gide® was used and on the other side a connective tissue graft was placed.

**Conclusion:** Geistlich Fibro-Gide® shows predictable and comparable results in soft-tissue thickness augmentation around dental implants compared to a connective tissue graft.



- 1 Implant placement planned for site #3 and #5 with soft-tissue treatment utilizing a CTG and for sites #10, #12 and #13 with soft-tissue augmentation using Geistlich Fibro-Gide®.

2 Uncovering of site #10 shows a narrow ridge width and an insufficient amount of soft-tissue thickness.

3 Tooth #10 was extracted and immediately replaced by an implant.
- 4 Fill the gap procedure with Geistlich Bio-Oss Collagen® to achieve contour augmentation and preserve horizontal ridge dimensions.

5 Geistlich Fibro-Gide® was trimmed to half of the thickness to fit the defect and placed into sites #10, 11, 12 and 13.

6 The entire site was closed tension-free to facilitate uneventful wound healing.
- 7 The 3 month follow-up shows uneventful soft-tissue healing and an increase of soft-tissue thickness at the desired sites.

8 The 6 month follow-up with the final reconstruction shows that the soft-tissue thickness at the desired site is maintained over time. This contributes to an esthetic and pleasing outcome. (Restorative work by Dr. Chao-Chieh Yang, IUSD)

9 The 2 month follow-up showing a comparison of the treated sites, one with CTG (left) and one with Geistlich Fibro-Gide® (right) in the same patient. Comparable results have been achieved with both treatments, but without the need for a donor site.

# Treatment of Single Gingival Recession with Coronally Advanced Flap Technique



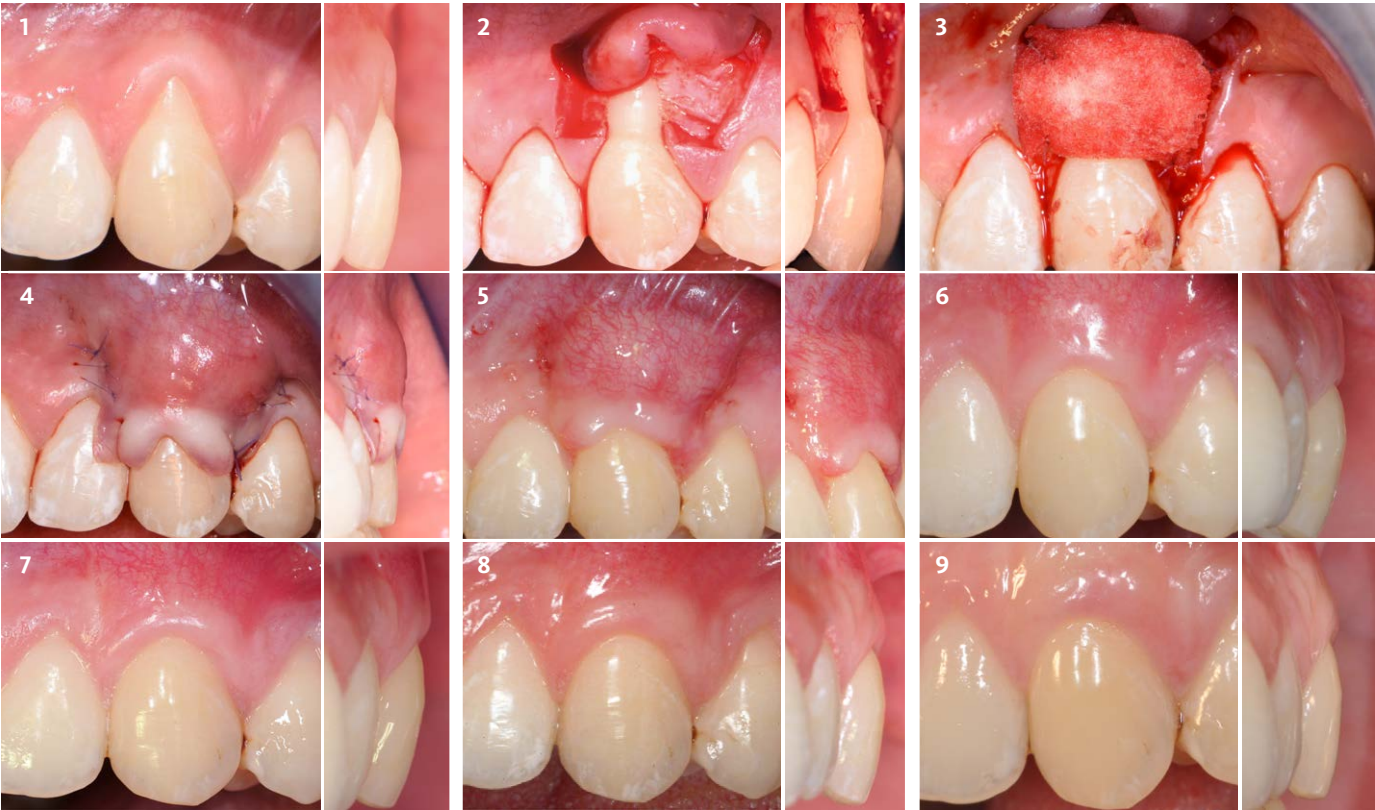
“Geistlich Fibro-Gide® in combination with a coronally advanced flap is a safe, minimally-invasive technique and shows promising results by increasing the soft-tissue thickness and esthetic appearance.”

Prof. Giovanni Zucchelli | Bologna, Italy

3 year follow-up

**Objective:** Complete root coverage of a single tooth recession defect.

**Conclusion:** The use of Geistlich Fibro-Gide® in combination with a coronally advanced flap enhanced root coverage and soft-tissue thickness.



- 1 Baseline: recession defect Miller Class I on tooth #11.

2 Trapezoidal flap design: split-full-split flap elevation flap.

3 Positioning of Geistlich Fibro-Gide® and fixation with single sutures (PGA 7.0 Sutures) at the base of the de-epithelialized anatomic papillae and in the apical mesial and distal angles.
- 4 Tension-free wound closure with two sling sutures (PGA 6.0 Sutures).

5 Suture removal 14 days post-surgery.

6 Buccal view 3 months post-surgery.
- 7 Buccal view 6 months post-surgery.

8 Follow-up after 1 year: complete root coverage with Geistlich Fibro-Gide® is achieved.

9 3 year post-surgery: stable results with Geistlich Fibro-Gide®.



# Treatment of Multiple Gingival Recession with Coronally Advanced Flap Technique



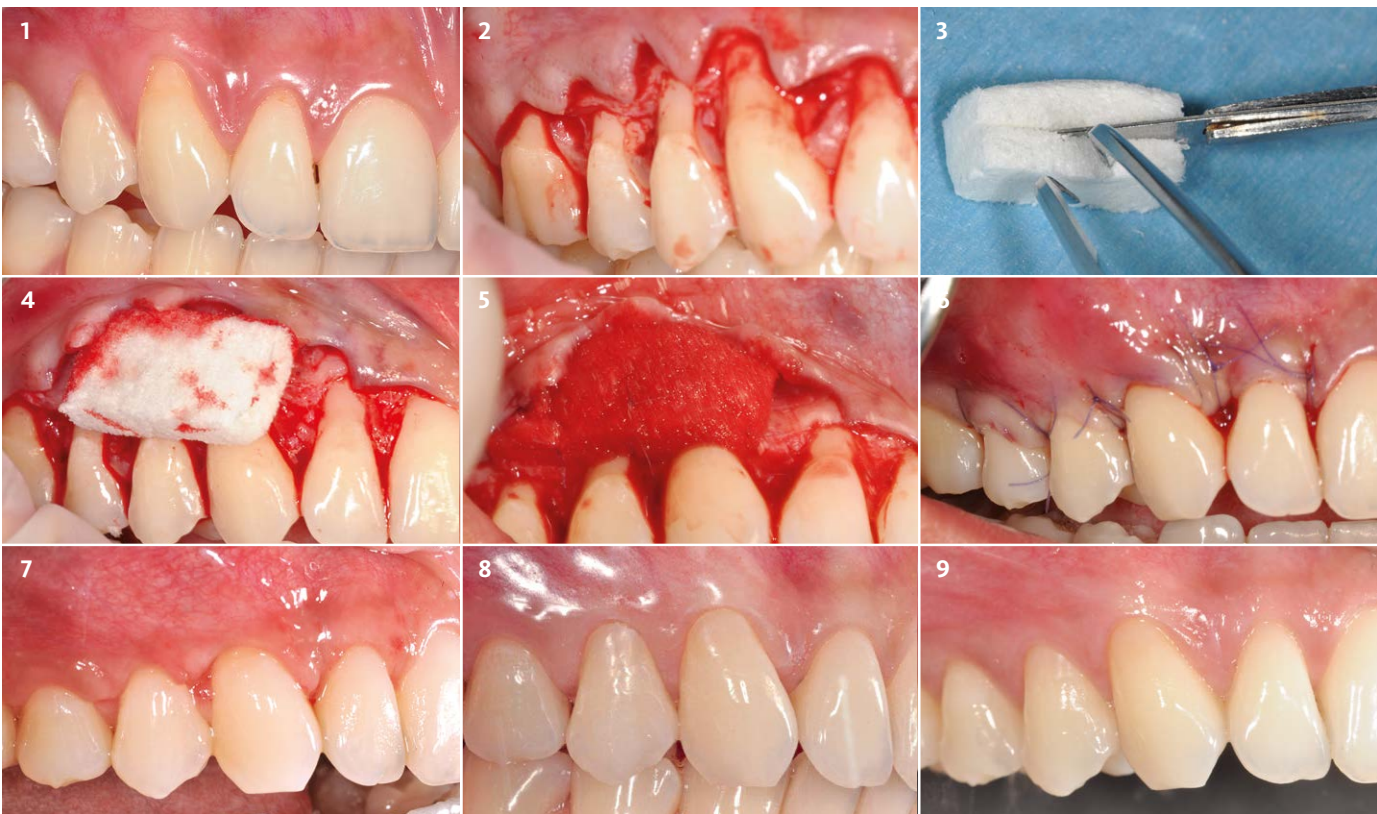
“The use of Geistlich Fibro-Gide® in combination with CAF allows us to obtain complete, stable root coverage over time.”

Dr. Raffaele Cavalcanti | Bari, Italy

2 year follow-up

**Objective:** Complete root coverage of multiple recession defects and dentin hypersensitivity reduction.

**Conclusion:** Complete root coverage was achieved with Geistlich Fibro-Gide® for multiple recession defects and the dentin hypersensitivity problem was resolved.



- 1 Baseline: multiple recession defect Miller Class I with keratinized tissue less than 3 mm on teeth #7 to #5.

2 Coronally advanced flap preparation and elevation for sufficient release.

3 Geistlich Fibro-Gide® is cut in half to 3 mm thickness.
- 4 3 mm Geistlich Fibro-Gide® is placed in the defect and absorbs blood immediately.

5 Positioning of Geistlich Fibro-Gide® and fixation with single sutures (7-0 PGA sutures).

6 Tension-free wound closure with sling sutures (6-0 PGA sutures).
- 7 Suture removal 14 days post-surgery.

8 Follow-up after 12 months: complete root coverage with Geistlich Fibro-Gide® is achieved.

9 2 year follow-up: complete root coverage with Geistlich Fibro-Gide®.

# Vestibular Incision Subperiosteal Tunnel Access (Modified VISTA Technique)

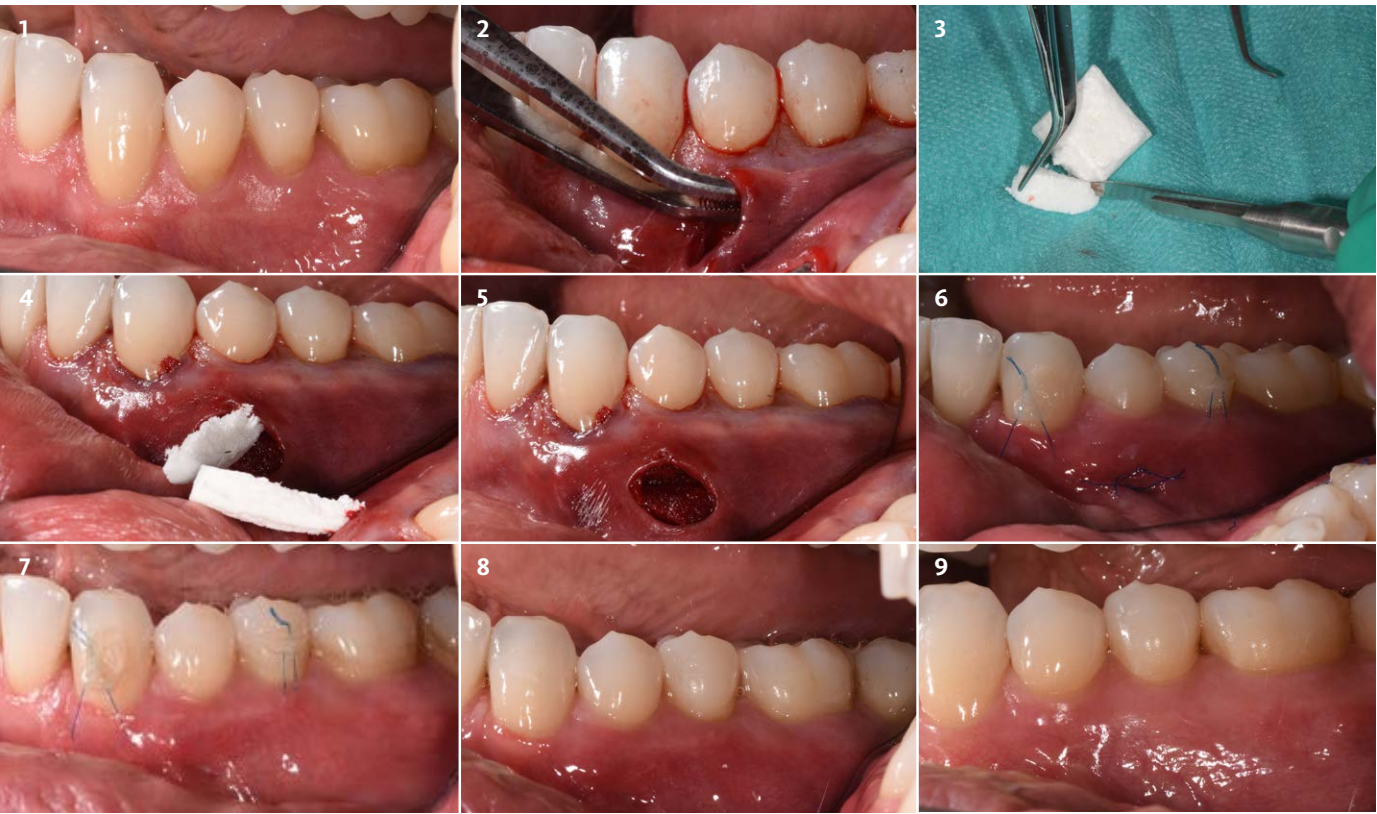


“Using Geistlich Fibro-Gide® in combination with a minimally-invasive technique for root coverage results in an excellent clinical outcome and high patient satisfaction.”

Dr. Ulrike Schulze-Späte | Jena, Germany

**Objective:** Root coverage of multiple recession defects for a thin gingival biotype in a Miller Class I situation.

**Conclusion:** A minimally-invasive tunnel approach in combination with the volume-stable Geistlich Fibro-Gide® resulted in complete root coverage.



- 1 Baseline: recession defects on teeth #19 to #22 in the lower left quadrant. Exposed root surfaces of these teeth were thoroughly scaled and root planed before surgery.

2 A full thickness muco-gingival tunnel was prepared through a minimally-invasive vestibular access incision apical to the teeth with gingival recessions.

3 Geistlich Fibro-Gide® was cut into small pieces in a dry state using a scalpel.
- 4 Insertion of Geistlich Fibro-Gide® into the subperiosteal tunnel.

5 Geistlich Fibro-Gide® in situ: the gingival margin had been coronally advanced and stabilized after pieces of Geistlich Fibro-Gide® were placed.

6 1 week post-surgery: anchoring sutures were left in place for 1-2 weeks.
- 7 2 weeks post-surgery: anchoring sutures in place.

8 2 weeks post-surgery: removal of anchoring sutures.

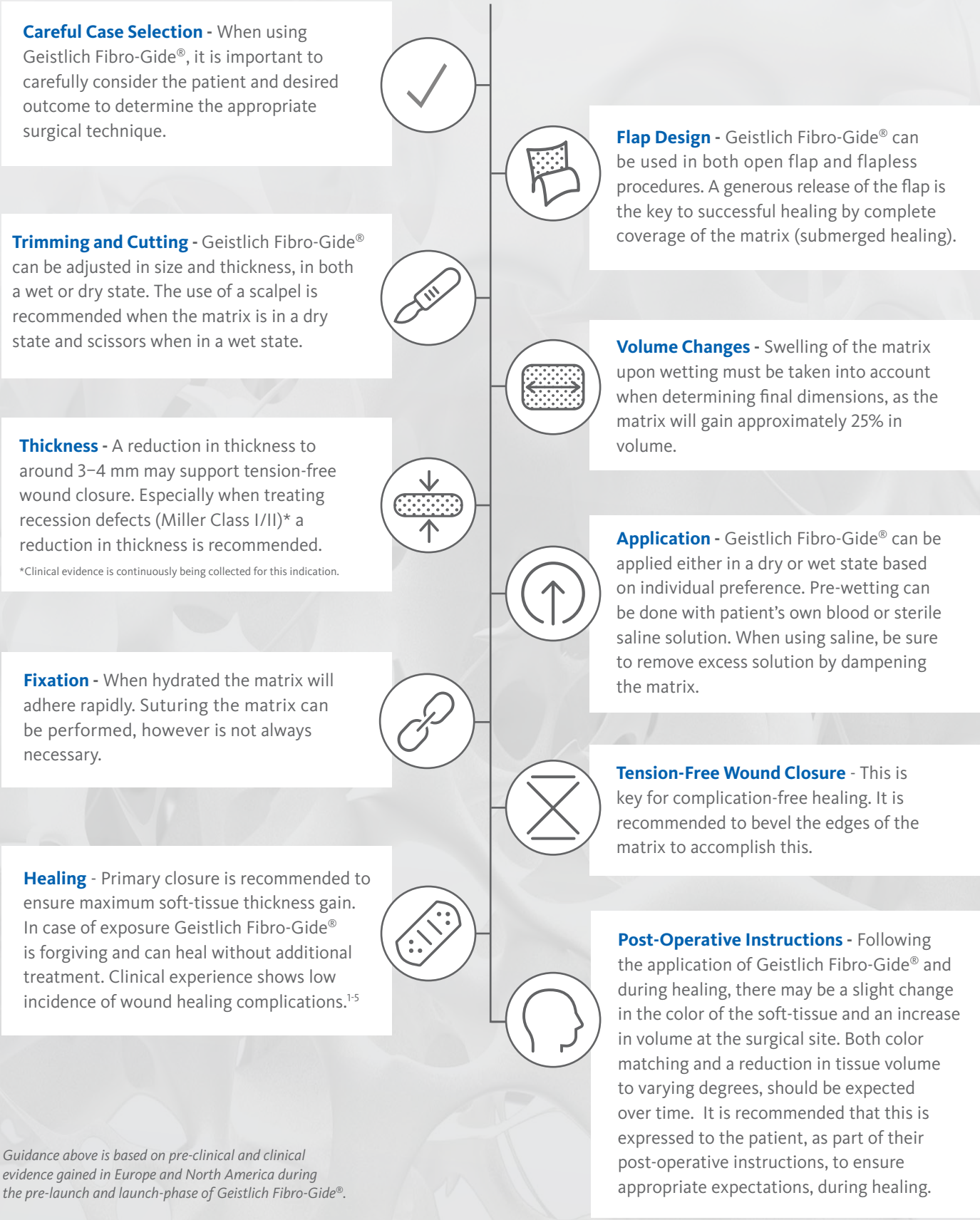
9 7 months post-surgery: complete recession coverage.



# Handling at a Glance

Geistlich  
**Fibro-Gide®**

As with any new product, initially you will experience some differences in the handling properties and performance of the matrix. The instructions below are intended to provide insights for the successful use and application of Geistlich Fibro-Gide®.



Guidance above is based on pre-clinical and clinical evidence gained in Europe and North America during the pre-launch and launch-phase of Geistlich Fibro-Gide®.

# How does a company earn your trust?

Exactly.

We know that patient care is exactly what drives your choice of professional partners and products. That's why Geistlich Biomaterials strives to bring you regenerative treatment options you can use with absolute confidence.

**Products**  
Geistlich biomaterials are designed to meet your highest measure of reliability, utility and efficacy – making successful regenerative outcomes a foundation of your practice.

**Process**  
To ensure the quality and consistency you expect, we safeguard our time-tested manufacturing processes by owning and controlling each essential step.

**People**  
Regeneration is our life's work – forging partnerships and a bond of trust with dedicated doctors, scientists and professionals around the world.

**Patients**  
We are inspired by the trust you have earned from your patients. Comfort and confidence grow naturally when time, attention and common goals are shared.

“I want you to know that in every Geistlich product, you'll find the passion and commitment of our people.”

– Andreas Geistlich

EXACTLY  
like no other.



Geistlich Pharma North America, Inc.  
202 Carnegie Center  
Princeton, NJ 08540  
Customer Care Toll-free: 855-799-5500  
info@geistlich-na.com  
dental.geistlich-na.com

## Geistlich Fibro-Gide®

The first volume-stable  
collagen matrix designed for  
gaining soft-tissue thickness.<sup>4,6</sup>



**CAUTION:** Federal law restricts these devices to sale by or on the order of a dentist or physician.

### Indications:

Geistlich Fibro-Gide® is indicated for the following uses: Soft-tissue augmentation; localized gingival augmentation to increase keratinized tissue around teeth and implants; Alveolar ridge reconstruction for prosthetic treatment; and recession defects for root coverage.

### Warnings:

As Geistlich Fibro-Gide® is a collagen product, allergic reactions may not be totally excluded. Possible complications which may occur with any surgery include swelling at the surgical site, flap sloughing, bleeding, dehiscence, hematoma, increased sensitivity and pain, redness and local inflammation.

For more information on contraindications, precautions, and directions for use, please refer to the Geistlich Biomaterials Instructions for Use at: [dental.geistlich-na.com/ifu](http://dental.geistlich-na.com/ifu)

### REFERENCES

- 1 Thoma DS. et al. J Clin Periodontol. 2016 Oct; 43(10): 874–85 (clinical).
- 2 Zeltner M. et al. J Clin Periodontol. 2017 Apr; 44(4): 446–453 (clinical).
- 3 Huber S et al. J Clin Periodontol. 2018 Apr;45(4):504-512 (clinical).
- 4 Chappuis V et al. Int J Periodontics Restorative Dent. 2018 Jul/Aug;38:575-582 (clinical).
- 5 Mathes SH. et al. Biotechnol Bioeng. 2010 Dec 5; 107(6): 1029–39 (in vitro).
- 6 Thoma DS. et al. Clin Oral Implants Res. 2012 Dec; 23(12): 1333–9 (pre-clinical).
- 7 Thoma DS. et al. Clin Oral Implants Res. 2015 Mar; 26(3): 263–70 (pre-clinical).
- 8 Thoma DS. et al. J Clin Periodontol 2017; 44: 185–194 (pre-clinical).
- 9 Instructions for Use. Geistlich Fibro-Gide®. Geistlich Pharma AG, Wolhusen, Switzerland.
- 10 Data on file. Geistlich Pharma AG, Wolhusen, Switzerland (pre-clinical).